

White House Portrait Collage

What is a portrait?

A painting, drawing, photograph, or engraving of a person, especially one depicting only the face or head and shoulders.

What is a collage?

A piece of art made by sticking various materials such as:

- Photographs and pieces of paper, buttons, or fabric onto a backing.
- The art of making collages.
- A combination or collection of various things.



Glass tile mosaic portrait of John F. Kennedy, made by Merritt W. Yearsley of Dallas, Texas.

How do I create a White House Portrait Collage?

- Use the outline of one of the Presidents or First Ladies.
- Choose from various materials and arrange them on your portrait outline.
- Glue down the materials onto your portrait outline, color and create your own White House Portrait Collage!

Department of Education and Public Programs

JOHN F. KENNEDY
PRESIDENTIAL LIBRARY AND MUSEUM

Folk Art Portraits of President Kennedy

President Kennedy received unique gifts from ordinary citizens who created one-of-a-kind works of art, including handmade portraits of him made from found materials. These heartfelt and handmade portraits show the respect and admiration the makers had for President Kennedy and are part of the John F. Kennedy Presidential Library and Museum collection.



Ribbon and Stamp Portrait of John F. Kennedy. Gift of Dora Blackburn of Baltimore, Maryland.

A portrait of President John F. Kennedy handmade from shiny sequins, colored pearlized ribbon cut into circular disks and set on the surface overlapping each other like a mosaic. A border around the image of President Kennedy is made with cancelled postage stamps of Presidents Lincoln and Washington.



Mosaic Portrait of John F. Kennedy. Made by Abraham Greenhouse of Perth Amboy, New Jersey.

This work of art is made of crushed eggshells dyed various colors with brown, gray, and black thread to outline the image of JFK's face and indicate his hair. The artist spent more than 100 hours creating the portrait.



Carved Peach Pit Portrait of John F. Kennedy. Made by R. J. McErlean of St. Petersburg, Florida.

Carved peach pit depicting an image of John F. Kennedy wearing a veteran's hat. To the left is carved an eagle sitting on a shield and below that is St. Christopher.



President and Mrs. Kennedy Shadowbox.

In this wood and glass shadowbox relief carved busts of John F. Kennedy and Jacqueline Kennedy are in front of an American flag with cardboard cut outs of painted photographs of their faces for the heads. President Kennedy wears a grey suit with blue tie and Jacqueline Kennedy wears a navy blouse.

Department of Education and Public Programs

JOHN F. KENNEDY
PRESIDENTIAL LIBRARY AND MUSEUM



President John F. Kennedy

Department of Education and Public Programs

JOHN F. KENNEDY

PRESIDENTIAL LIBRARY AND MUSEUM

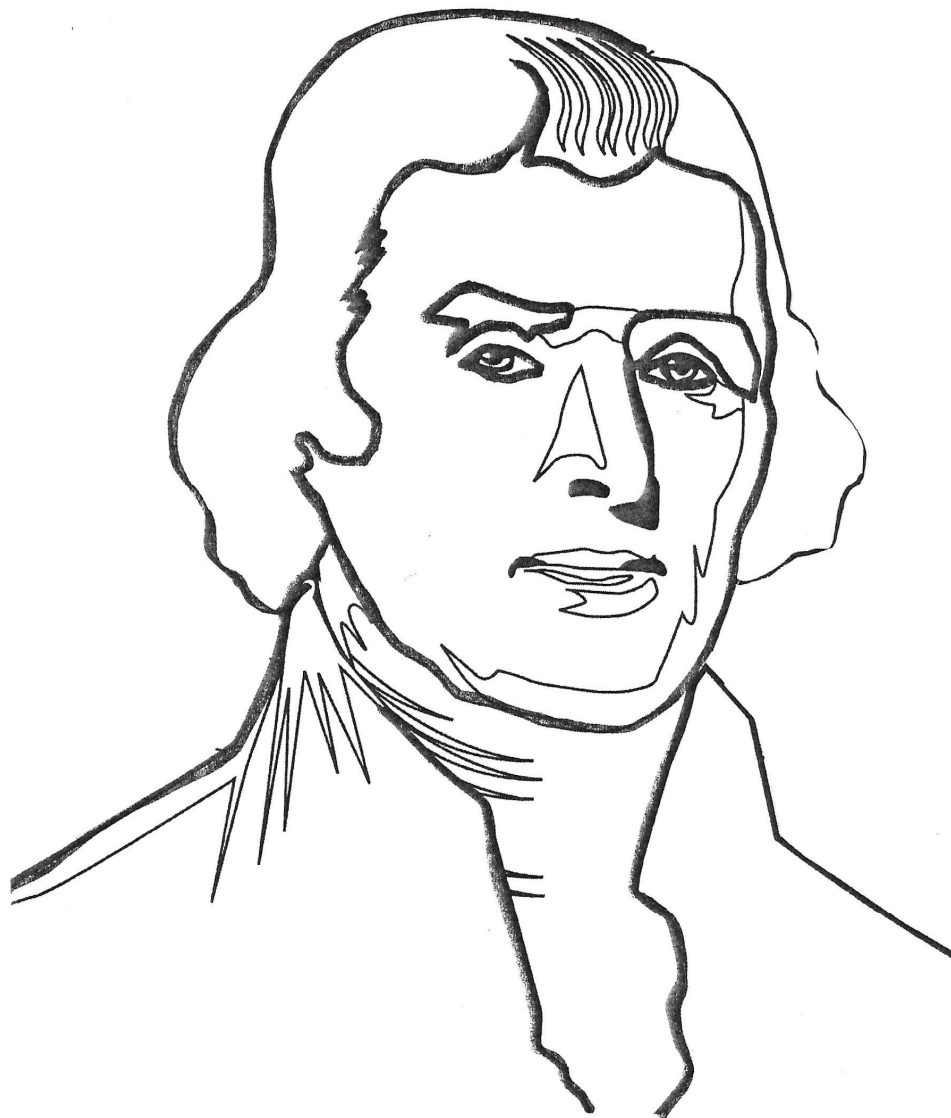


First Lady Jacqueline Kennedy

Department of Education and Public Programs

JOHN F. KENNEDY

PRESIDENTIAL LIBRARY AND MUSEUM



President Thomas Jefferson

Department of Education and Public Programs

JOHN F. KENNEDY

PRESIDENTIAL LIBRARY AND MUSEUM



First Lady Hillary Clinton

Department of Education and Public Programs

JOHN F. KENNEDY

PRESIDENTIAL LIBRARY AND MUSEUM



First Lady Michelle Obama

Department of Education and Public Programs

JOHN F. KENNEDY

PRESIDENTIAL LIBRARY AND MUSEUM

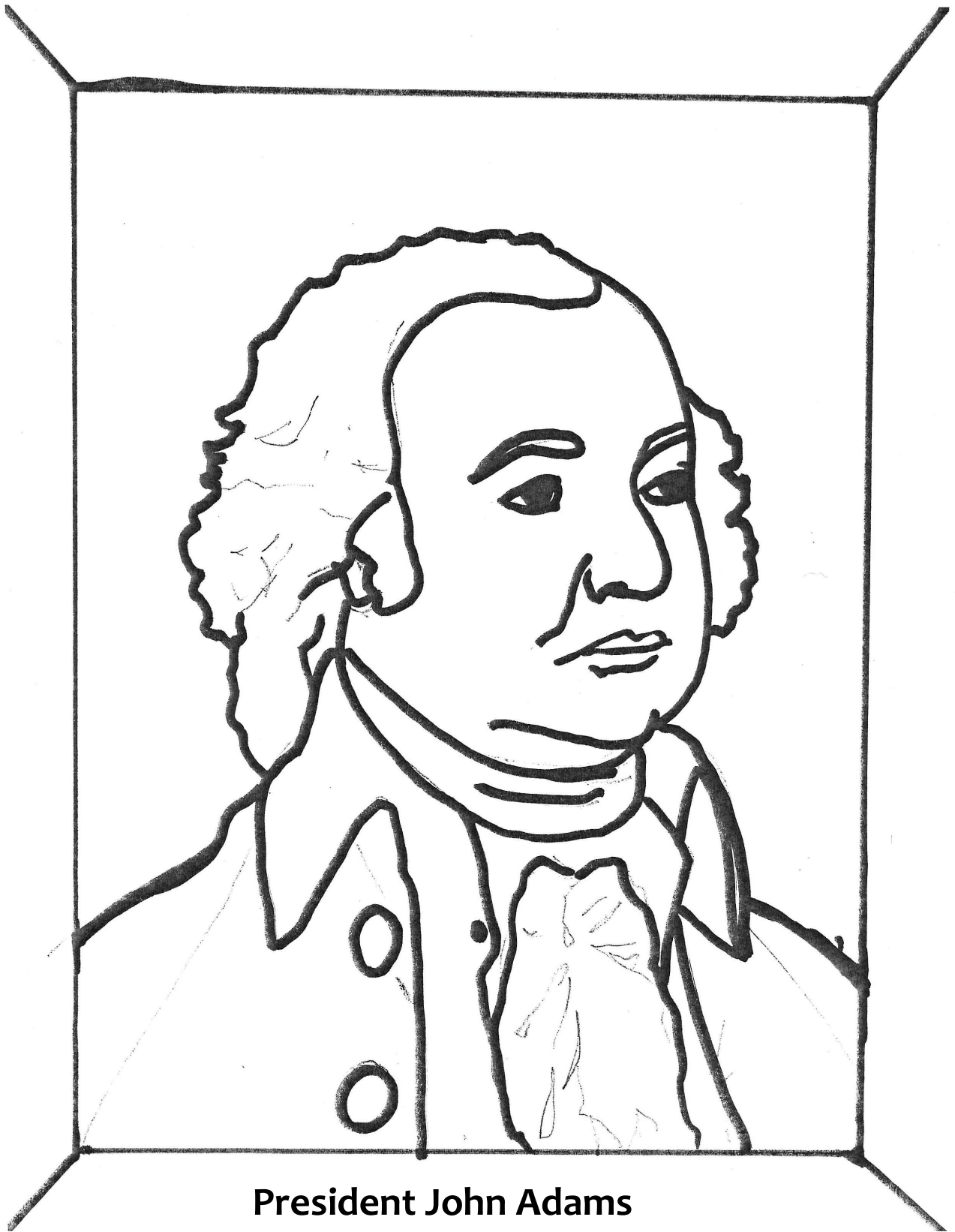


First Lady Abigail Adams

Department of Education and Public Programs

JOHN F. KENNEDY

PRESIDENTIAL LIBRARY AND MUSEUM

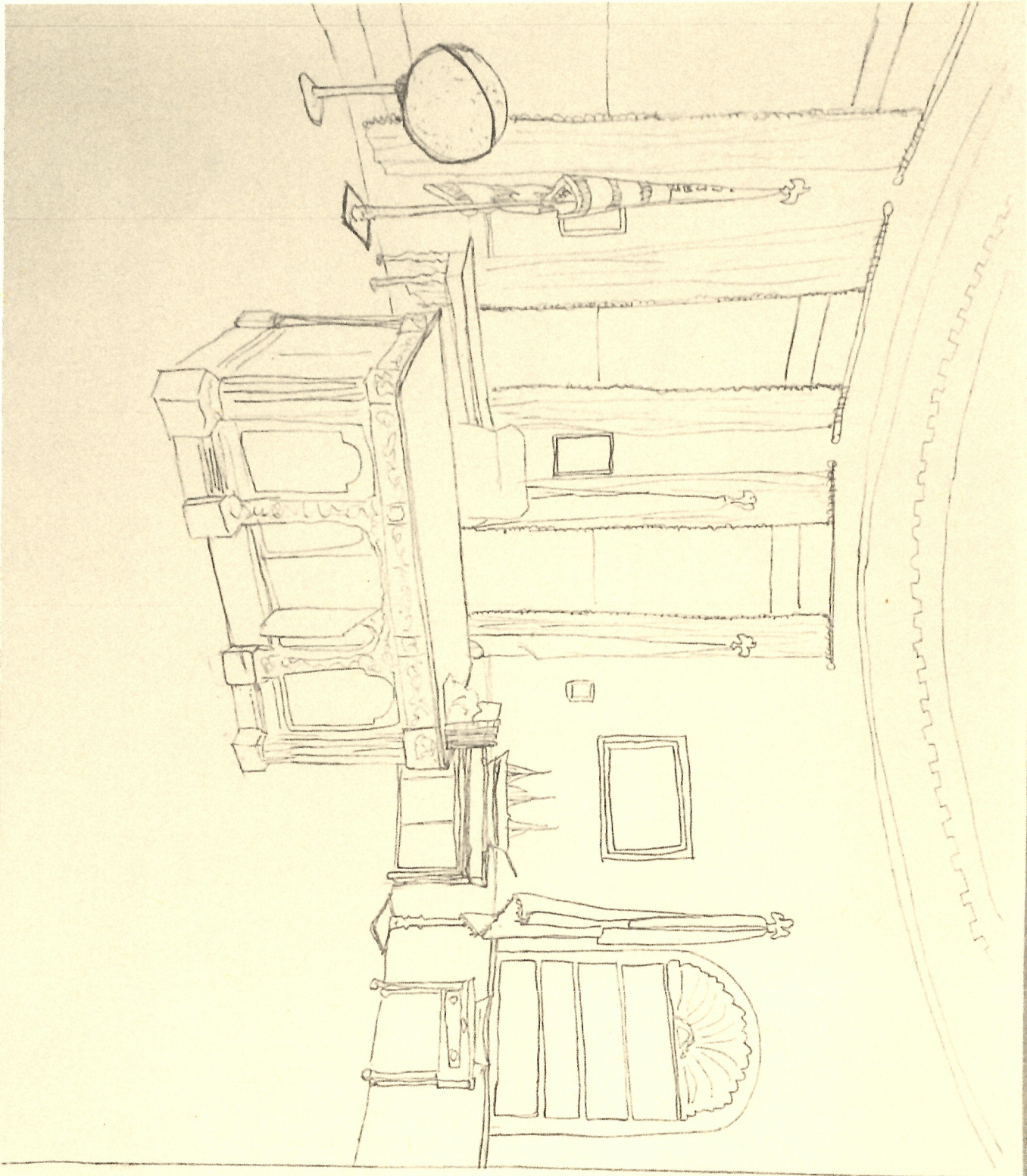


President John Adams

Department of Education and Public Programs

JOHN F. KENNEDY

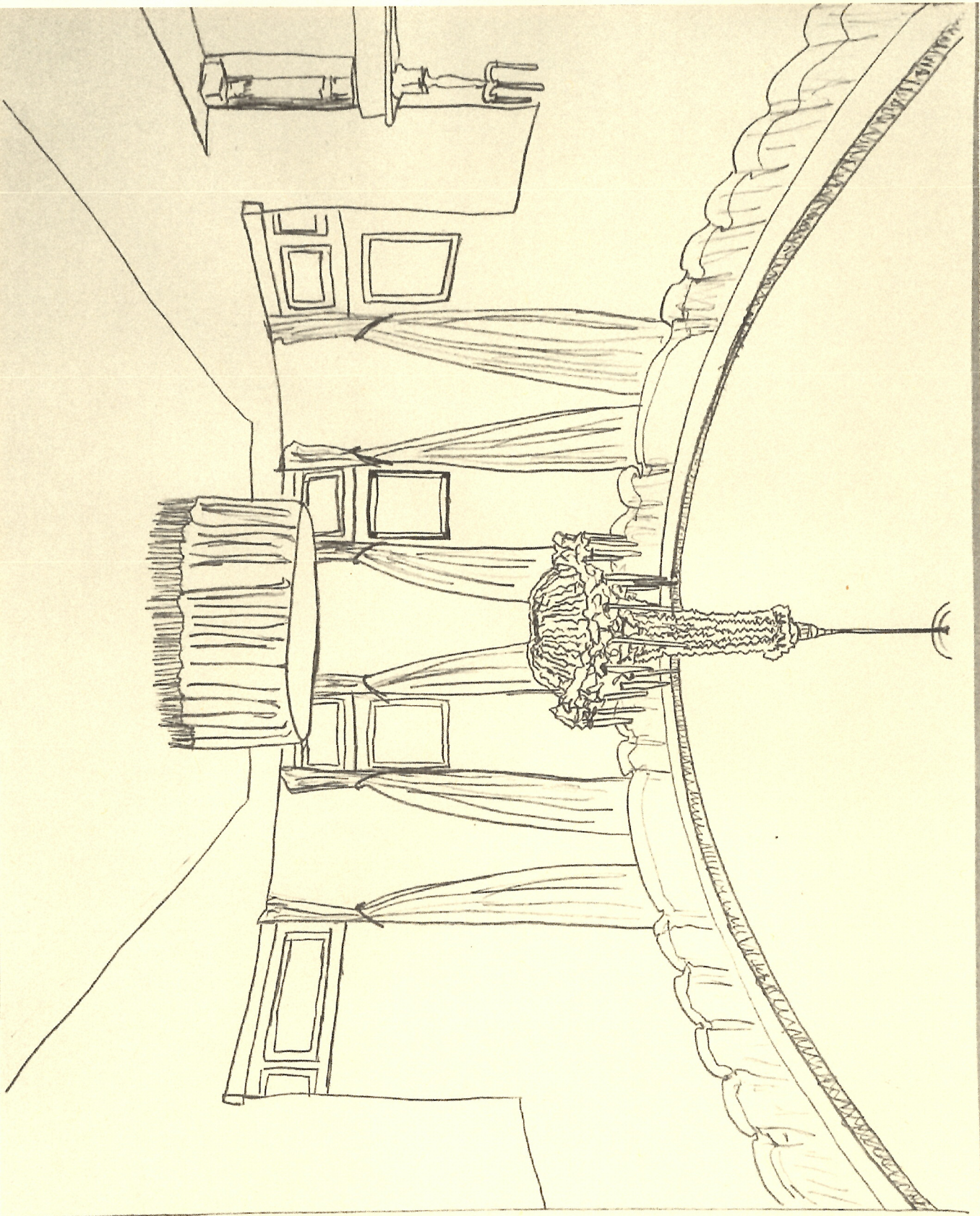
PRESIDENTIAL LIBRARY AND MUSEUM



The Oval Office
The White House

Designed by

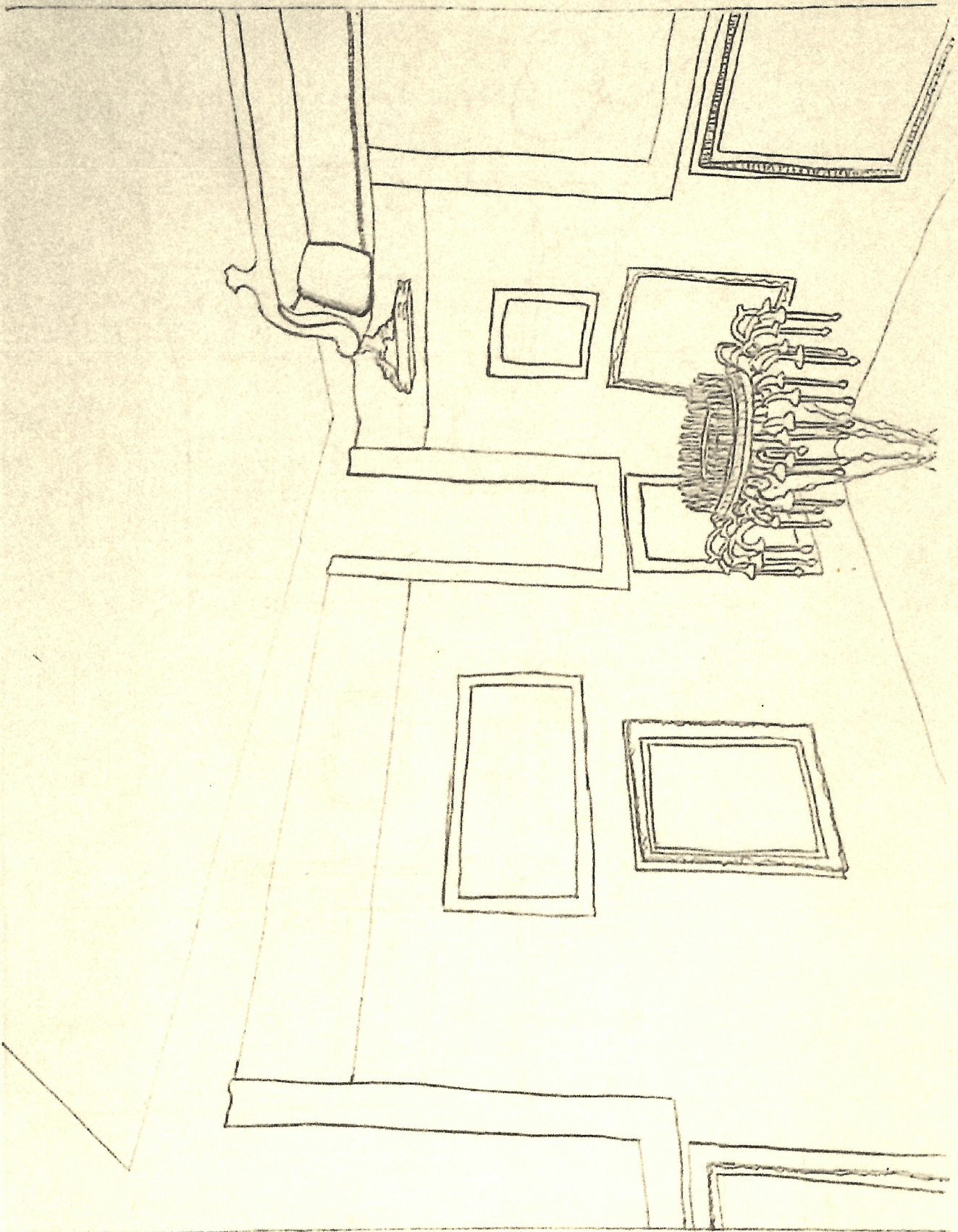
Autograph your masterpiece!



The Blue Room
The White House

Designed by

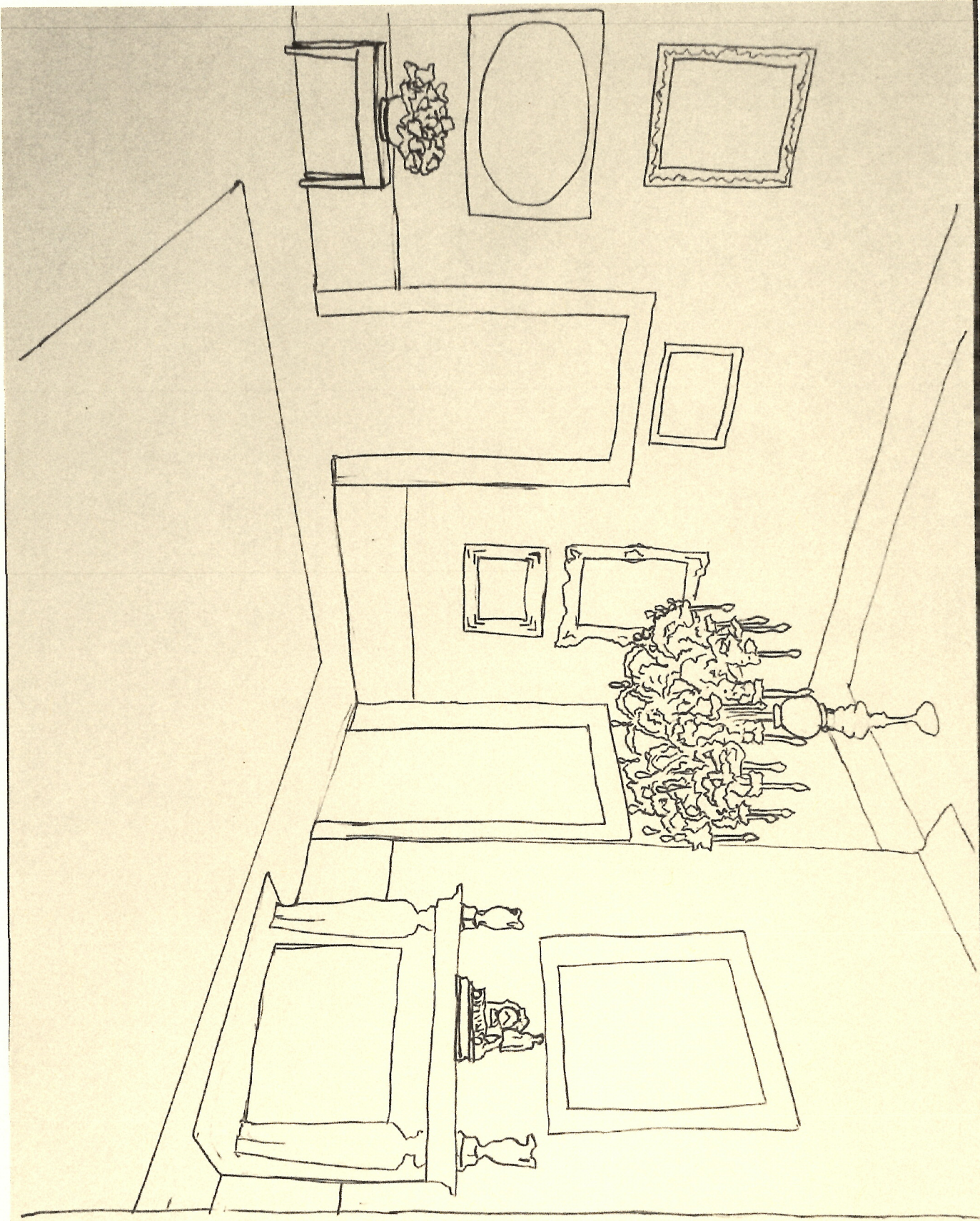
Autograph your masterpiece!



The Red Room
The White House

Designed by

Autograph your masterpiece!



The Green Room
The White House

Designed by

Autograph your masterpiece

Popsicle Stick Flags

President Kennedy did not want a statue or painting of himself in the Library and Museum. The flag is the architect's way of referencing President Kennedy. It is a symbol that reminds us of him and of the office of the presidency.

The American flag flies 24 hours a day on the White House grounds.

The American flag has flown on the North Pole, on top of Mount Everest, and on the Moon, among other places.



The colors have meaning:

- Red symbolizes hardiness and valor.
- White symbolizes purity and innocence.
- Blue represents vigilance, perseverance, and justice.



Materials:

- 4 red popsicle sticks
- 3 white popsicle sticks
- 1 large popsicle stick
- Star stickers
- Blue square (2-inches X 2-inches)
- Clear tape

Directions:

1. Stack popsicle sticks next to each other, alternating the red and white (if you do not have red sticks, the plain sticks can be colored red with markers or crayons).
2. Use a piece of clear tape to keep the popsicle sticks in place and for added support. Then turn it over so the tape is on the back.
3. Glue the popsicle sticks to the top corner of the large wavy stick (make sure the clear tape is on the back).
4. Place the star stickers onto the blue square.
5. Glue the blue square with the star stickers to the top corner of the red and white sticks.

If you have a stick-on magnet, you can add it to the back of the wavy stick.

Department of Education and Public Programs